

Detention Pond 1 Improvements  
VOCHOA 2014



Photo #1: Contractor finished work at the pond.



Photo #2: North end of dam with small emergency overflow swale installed, that will only be used if debris plugs the culvert.

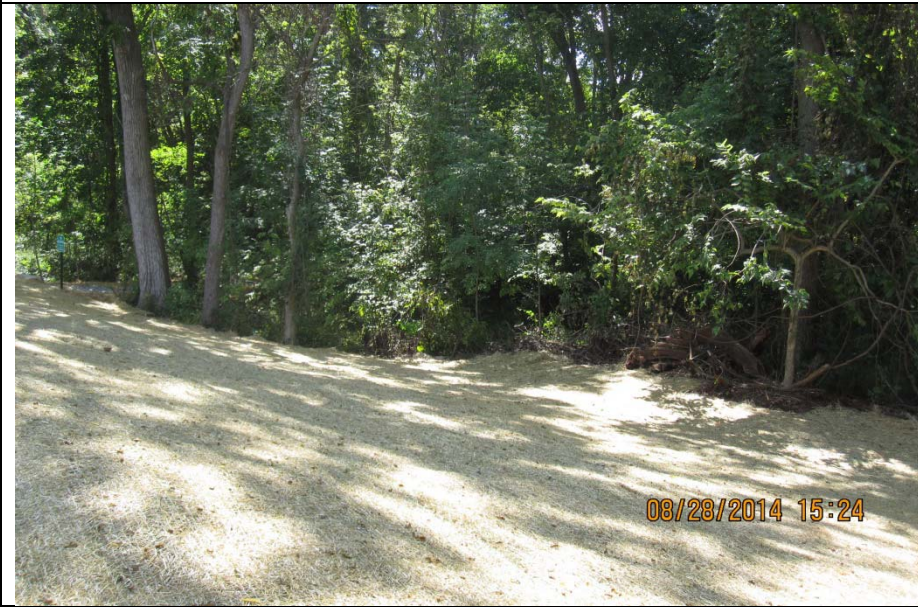


Photo #3: Finished grade of dam's outslope. Removed the tree stumps, debris, wire fencing, etc. Added clean soil fill.



Photo #4: Finished grading the dam. Placed straw matting across soil and seeded the area.